

# HARVEST GOLD CORP

## HVG:TSX.V

- **A Nevada based gold exploration company**
- **Experienced Management Team**
- **Recently Funded**
- **Rosebud Gold Mine drill program underway**
- **Potential near term production**

**Harvest Gold's management team provides over 100 years of geological and capital market experience. They are:**

**Mr. Rick Mark**, BA, M.Ed - CEO and Chairman, Director

- 22 years experience in the public market place
- CEO of VMS Ventures

**Greg Hill**, BA, M.Sc., CPG - President, Harvest Gold Corp. (US)

- 19 years experience in international gold exploration
- Past President and Director of the Geological Society of Nevada.

**Robert Cuffney**, B.Sc., M.Sc. – Director

- 35 years international exploration experience
- Former VP of Exploration with White Knight Resources

**Mr. John A. Roozendaal**, B.Sc. Geology- President and Director (Canada)

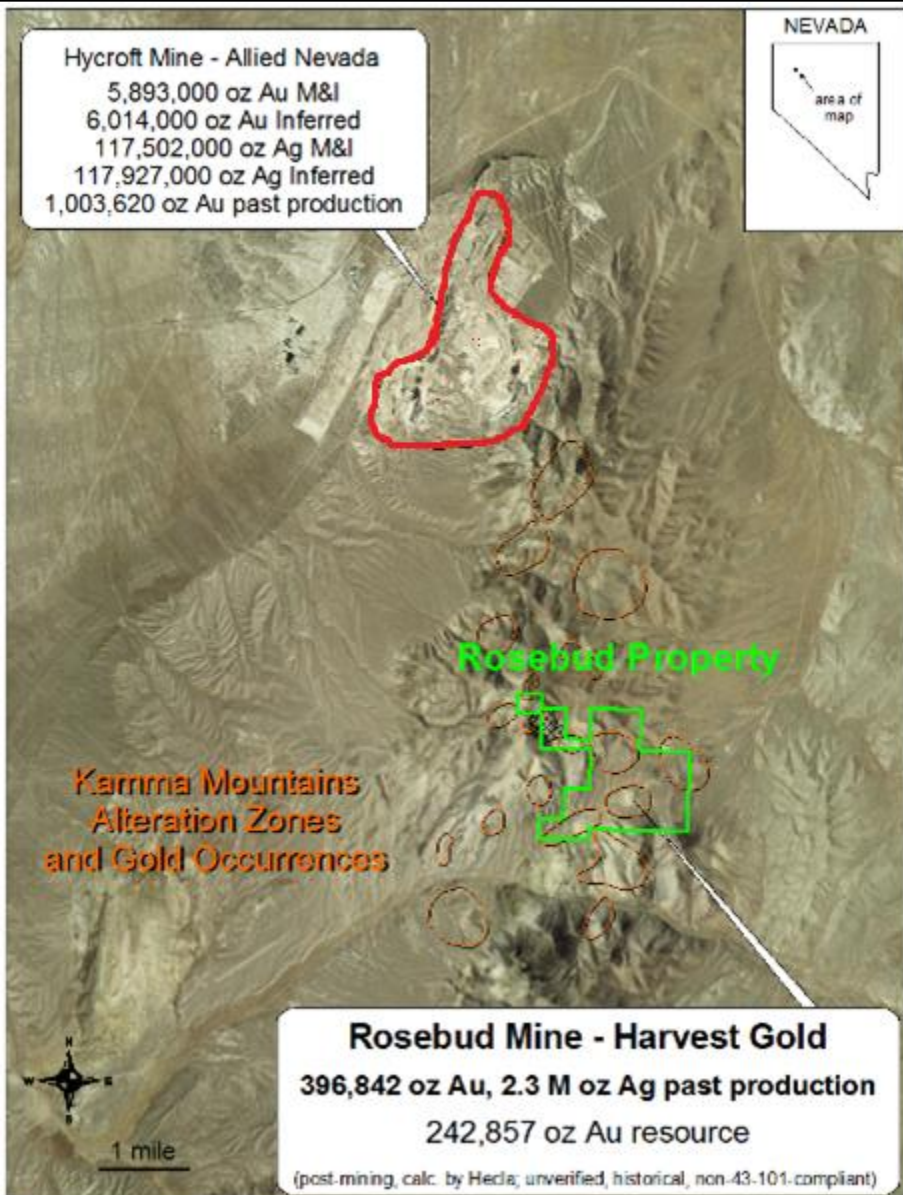
- 17 years focusing on precious, base and specialty metal exploration projects in North America



- Multiple gold exploration projects in North America
- Portfolio includes the past producing Rosebud Gold Mine

- Northwest Nevada, approximately five miles to the South of Allied Nevada's (TSX: ANV) Hycroft Mine in the Sulfur Mining District
- Harvest Gold has a 100% interest in 54 unpatented mining claims totaling 1,067 acres, through a lease/option to purchase agreement.
- Producing gold mine from 1997 to 2000 under Newmont/Hecla (396,842 oz Au / +2 million ozAg)
- The Rosebud Mine was one of the highest-grade gold producers in Nevada, averaging 0.416 oz Au/t and with grades up to 46.2 oz Au/t.
- Rosebud has the potential to host 3-5 million oz Au.

# ABOUT ROSEBUD MINE



Underground mine  
 operated 1997-2000,  
 Hecla/Newmont

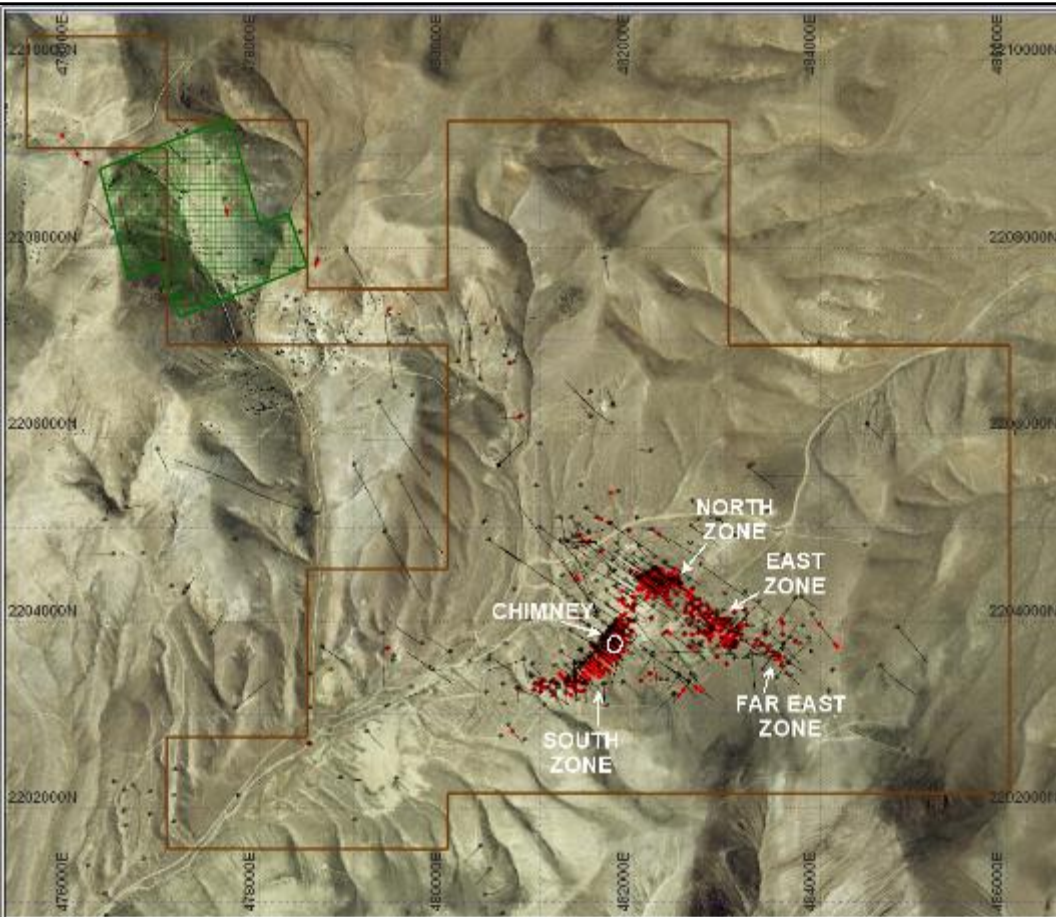
Historic grades up to  
 46.2 oz Au/t



## Mine production:

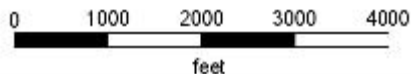
**396,842 oz Au:**  
 Avg. grade 12.95 g Au/t

**2,309,876 oz Ag**  
 Avg. grade 75.27 g Ag/t

# ROSEBUD MINE HISTORIC DRILLING



 Drill hole collar and trace  
 DH intercept > 0.1 opt Au



**ROSEBUD GOLD MINE PROPERTY  
DRILL HOLE LOCATIONS**

Drawn by: GTH Date: 12 March 2009

•multiple, high-grade drill hole intercepts remain in the ground at Rosebud. Highlights:

**RL - 217 64m @ 3.46 g/tonne**  
**RL - 179 94.5m @ 1.17 g/tonne**  
**RS - D345 31m @ 5.07 g/tonne**  
**RS - 425c 1.8m @ 28.25 g/tonne**

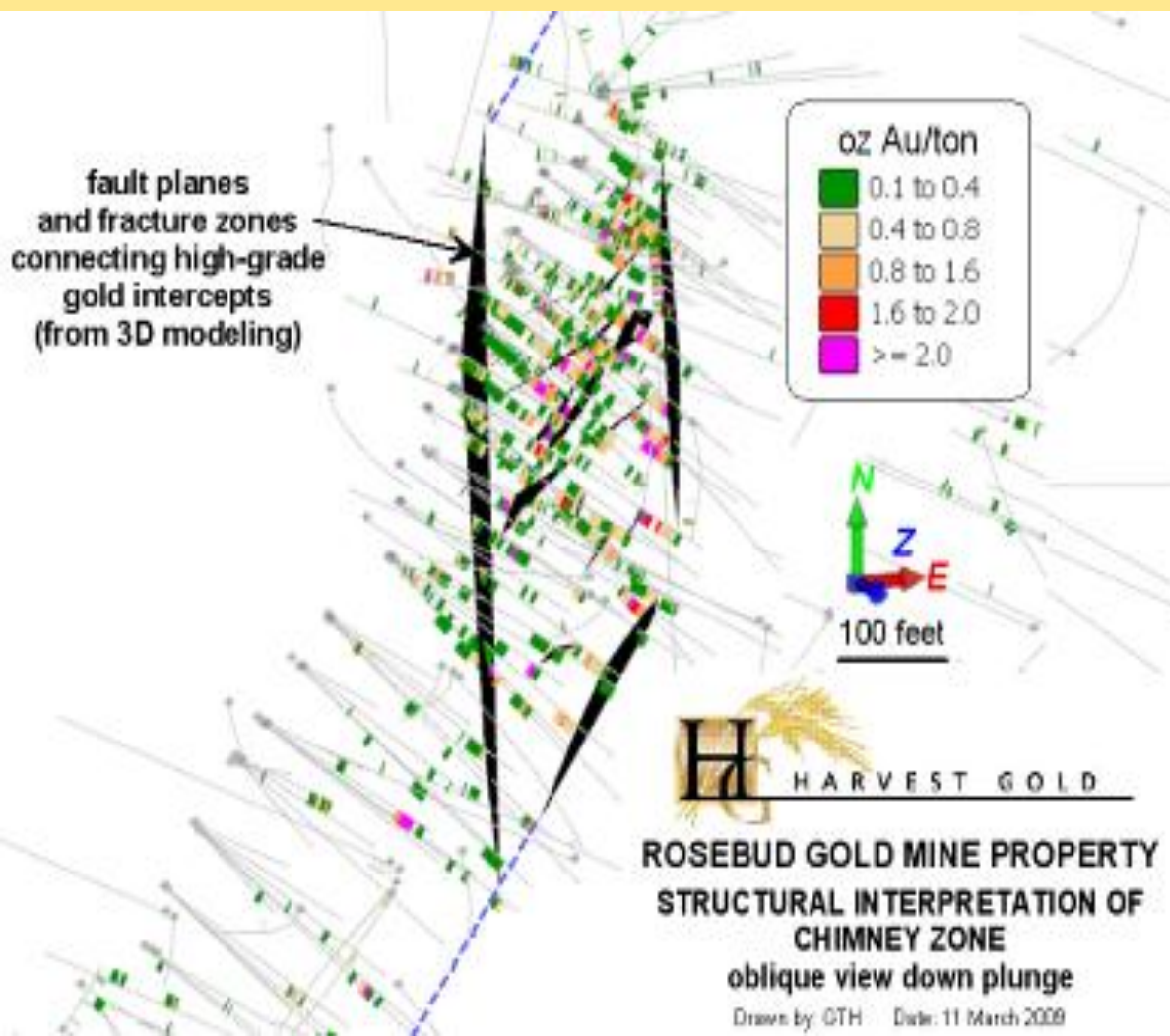
•Chimney zone ~ 70% of the South Ore Zone gold ounces; mined over a vertical extent of 220 feet (67.1m), 120 ft (36.6m) cross-cut graded 1.3 oz Au/t

•Mining took place in North, South, and East Zones

•Far East Zone not mined

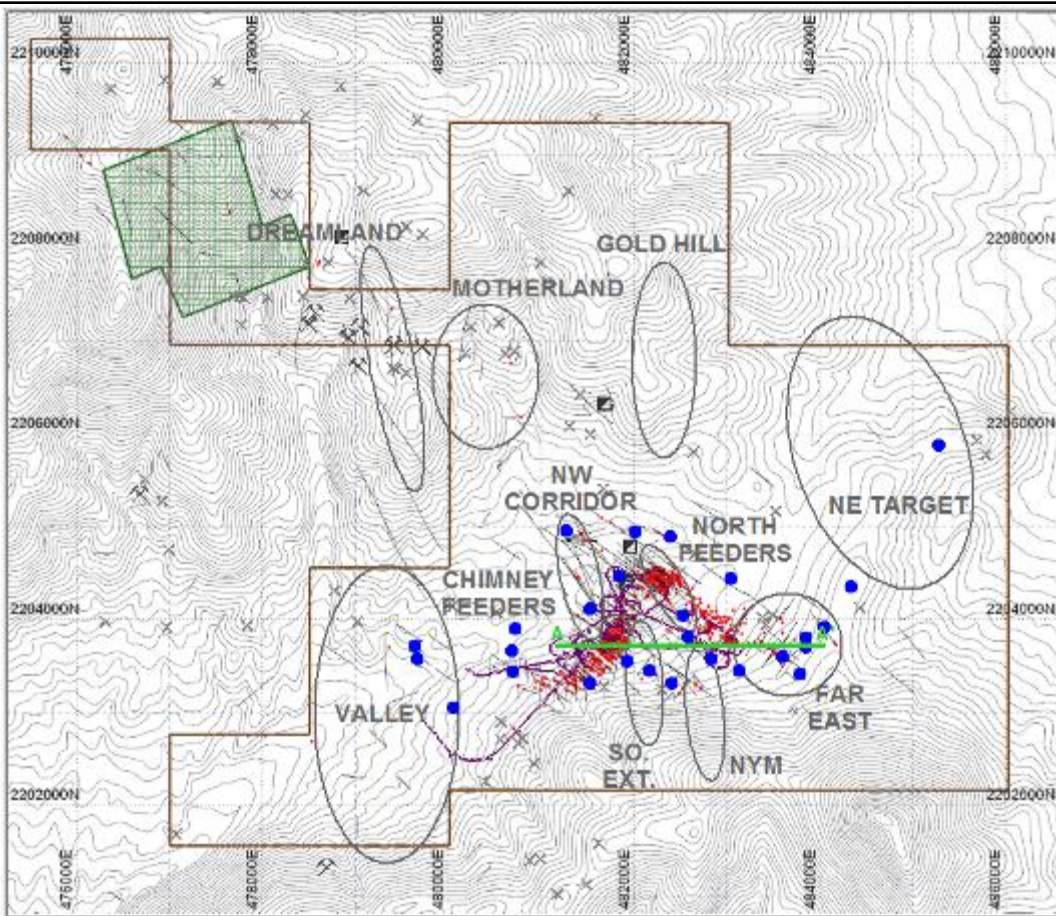
- New geologic mapping by HVG shows significant revisions to older mapping, especially structural features.
- In 2008, HVG acquired complete database of work by Newmont/Hecla/Santa Fe/LAC.
- Drill data digitized and compiled into 3D model.
- New structural model developed to target high-grade “chimney” zones and feeder veins.
- Subsurface data correlated with surface rock and enzyme leach soil data collected by HVG in 2008.
- Culmination of 2 years of data analysis and modeling, definition and refinement of targets for high confidence level.

## Looking Down Plunge through Chimney



- Reinterpretation defines the structure hosting the high-grade chimney zone

- Fault planes defined through 3D modeling of high-grade Au intercepts

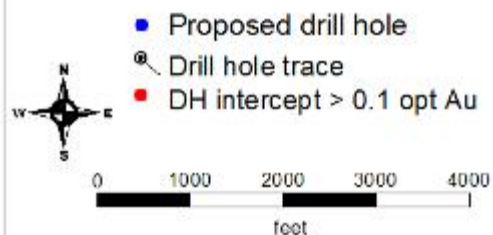


## Target types:

- High-grade chimneys
- Ore grade, bulk tonnage halo
- High-grade deep veins (not explored at depth)

## Rosebud Mine Potential:

- 3-5 Million oz Au

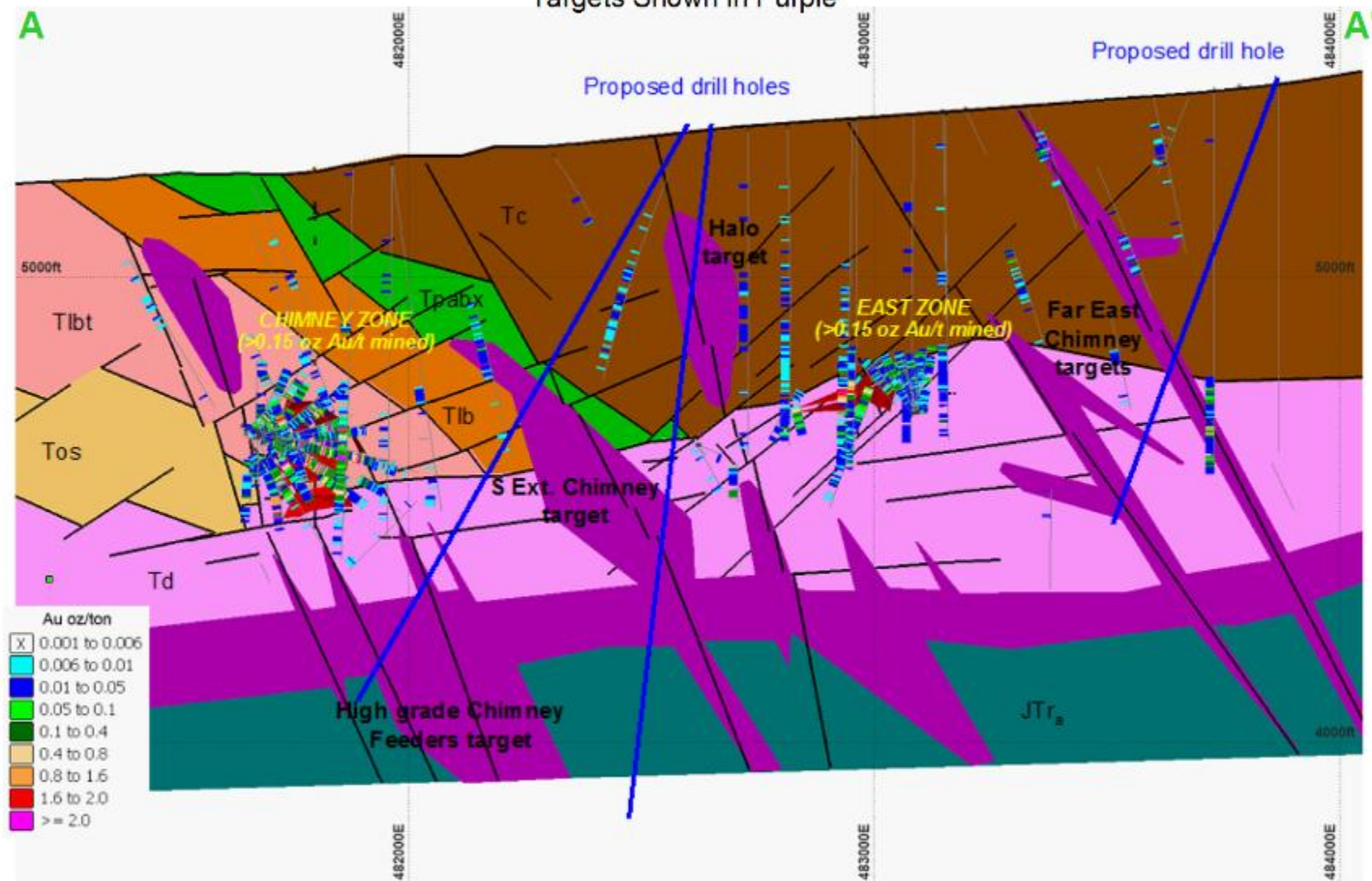


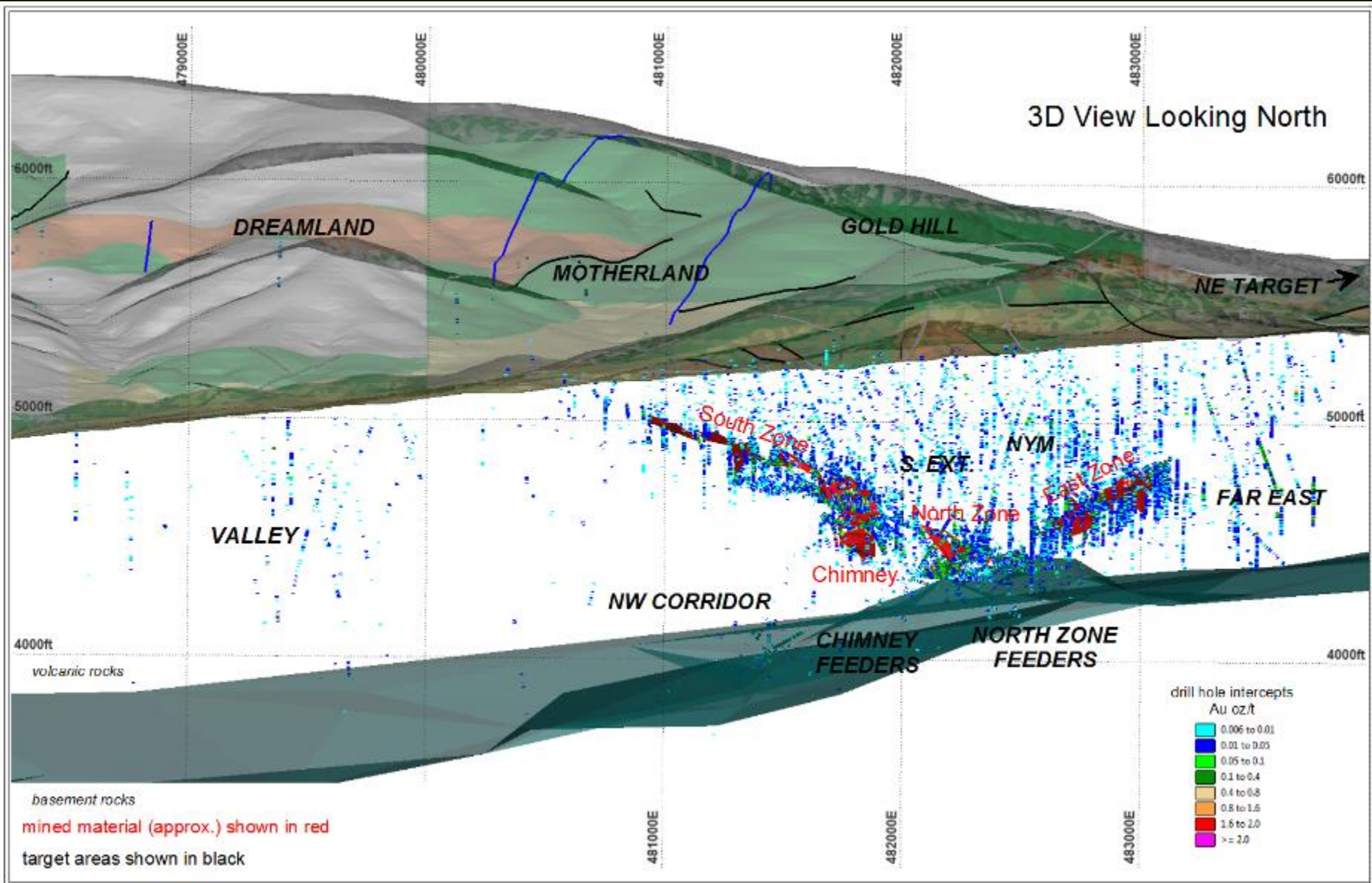

HARVEST GOLD

**ROSEBUD GOLD MINE PROPERTY**  
**PROPOSED DRILL HOLES**  
**AND CROSS SECTION TRACES**

Drawn by: GTH Date: 2 March 2010

Cross Section Looking North through Chimney, East, and Far East Zones  
Targets Shown in Purple







## CAPITAL STRUCTURE AT MARCH 2, 2010

I/O:	57,643,245
FD:	76,325,745
Options:	5,682,500
Warrants:	13,000,000

52 week high: \$0.19

52 week low: \$0.04

Capitalization: \$9.2 Million

- Complete 10 hole (3200m) RC drill program
  - Expand known mineralization zone
  - Discover new high-grade ore zone(s) with 3-5 million oz Au potential at Rosebud
- Phase II rosebud drill program
- Add high-quality new projects to property portfolio

**For more details regarding Harvest Gold Corporation,  
please contact:**

**Keith Patey, *Director of Communications***

**Tel: (604) 986-2020 or toll free 1 866-816-0118**

**Email: [KP@harvestau.com](mailto:KP@harvestau.com)**

**Or**

**Progressive Investor Relations**

**Tel: (604) 689-2881 or toll free 1 877-689-2881**

**Email: [info@progressive-ir.com](mailto:info@progressive-ir.com)**