

Harvest Gold Corp. (TSXV: HVG) – Phase 2 Drill Program at Rosebud Gold Mine Project in Progress

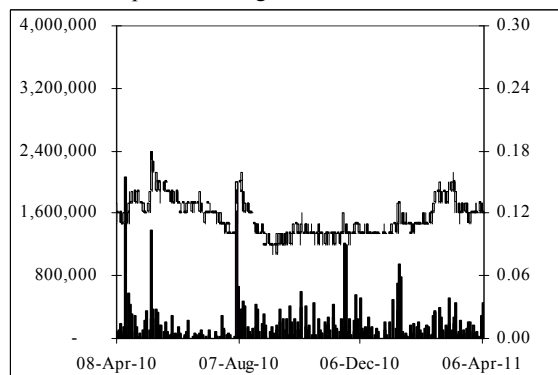
Sector/Industry: Junior Exploration/Mining

www.harvestgoldcorp.com

Market Data (as of April 11, 2011)

Current Price	C\$0.12
Fair Value	C\$0.35 (↑)
Rating*	BUY
Risk*	5 (Highly Spec)
52 Week Range	C\$0.08 - C\$0.18
Shares O/S	69.81 mm
Market Cap	C\$8.38 mm
Current Yield	N/A
P/E (forward)	N/A
P/B	2.9x
YoY Return	0.0%
YoY TSXV	42.1%

*see back of report for rating and risk definitions



Investment Highlights

- Harvest Gold continues to focus on advancing its Rosebud gold mine project in Nevada.
- Phase 1 drilling completed at Rosebud in 2010 intersected gold and silver in every hole.
- Hole HGR-10 intersected 2.13g/t Au equivalent over 12.2 metres at shallow depth in the sparsely drilled Valley Target.
- The Phase 2 drilling program at Rosebud, consisting of approximately 4,270 metres RC drilling of up to 18 holes, is ongoing.
- Three Phase 2 holes have been completed to test the Valley Target.
- On February 3, 2011, the company closed a private placement of 10.05 million units at a price of \$0.10 per unit for gross proceeds of \$1.05 million.
- We have raised our fair value estimate from \$0.30 to \$0.35 per share.

Key Financial Data (FYE - Mar 31)

(C\$)	2011 (9 mo)	2010
Cash	450,168	266,046
Working Capital	433,282	(10,561)
Mineral Assets	2,421,838	1,671,450
Total Assets	2,999,935	1,970,133
Net Income	(423,425)	(4,759,570)
EPS	(0.01)	(0.11)

Harvest Gold is a TSX Venture listed junior mineral exploration company. The company's flagship property, Rosebud, hosts a past producing, high grade underground mine operated by a Hecla Mining (NYSE: HL) and Newmont Mining (NYSE: NEM) joint venture from 1997 to 2000. Remaining in place non 43-101 compliant historic resources total approximately 0.24 million ounces of gold and 2.13 million ounces of silver. A Phase 1 drill program at the project returned positive results and Phase 2 drilling is ongoing.

**Rosebud Gold
Mine Project**

Phase 1 Drilling Results

The company has released all the results from last year's Phase 1 drilling program at the Rosebud gold mine project. The program consisted of 12 reverse circulation holes totaling 4,574m. All of the Phase 1 drill holes intersected gold and silver mineralization. Among these 12 drill holes, 10 of them were drilled within the mine footprint area and the remaining 2 at the Valley target. Figure 1 on the next page is a map showing locations of all the 2010 drill holes. The results from the first 8 holes were discussed in our previous report and the following table lists drill highlights from the remaining 4 holes.

Table 1 Drill Highlights at Rosebud Gold Mine Project (Source: Company)

	FROM metres	TO metres	INTERVAL metres	Au g/t	Ag g/t	AuEq g/t
HGR-9	13.7	16.8	3.0	1.16	7.7	1.28
HGR-10	19.8	32.0	12.2	1.81	20.9	2.13
<i>including</i>	21.3	24.4	3.0	4.26	15.3	4.49
<i>and</i>	27.4	29.0	1.5	3.53	58.6	4.42
	48.8	50.3	1.5	2.77	12.2	2.96
	61.0	77.7	16.8	0.21	31.5	0.69
	129.5	138.7	9.1	0.20	8.3	0.32
HGR-11	62.5	117.3	54.9	0.29	3.9	0.34
<i>including</i>	77.7	80.8	3.0	1.15	3.3	1.20
	350.5	353.6	3.0	1.10	15.8	1.34
	364.2	388.6	24.4	0.29	23.1	0.64
<i>including</i>	370.3	373.4	3.0	0.75	48.2	1.48
<i>and</i>	385.6	388.6	3.0	0.51	60.2	1.43
HGR-12	7.6	22.9	15.2	0.26	8.8	0.39
<i>including</i>	21.3	22.9	1.5	0.88	34.6	1.41
	36.6	57.9	21.3	0.19	7.2	0.30
<i>including</i>	36.6	38.1	1.5	0.16	59.7	1.07
	193.5	213.4	19.8	0.31	3.1	0.36
	280.4	283.5	3.0	0.36	12.0	0.54

Note: Gold equivalent (AuEq) values calculated using a Ag:Au ratio of 66:1, based on a gold price of US\$1160/oz and a silver price of US\$17.60/oz. No Ag or Au recovery factors have been applied due to a lack of appropriate metallurgical data. All holes are inclined except for HGR-1. True widths are not known and additional modeling and drilling will be required to determine true widths.

Source: Company

The new assays from HGR-9 to HGR-12 continue to show positive results at the project. The unconformity target was encountered over 24.4 metres at 0.64g/t Au equivalent in Hole HGR-11. **This hole, along with HGR-3, HGR-4, HGR-8, and nearly all historical holes that penetrated the unconformity in this area, outlined a northeast oriented mineralized zone containing anomalous gold and silver.**

Hole HGR-10 intersected 2.13g/t Au equivalent over 12.2 metres at shallow depth in the sparsely drilled Valley target. This drill intercept suggests a potential zone of near surface gold and silver mineralization approximately 500 metres from the main targets at the Mine Footprint area.

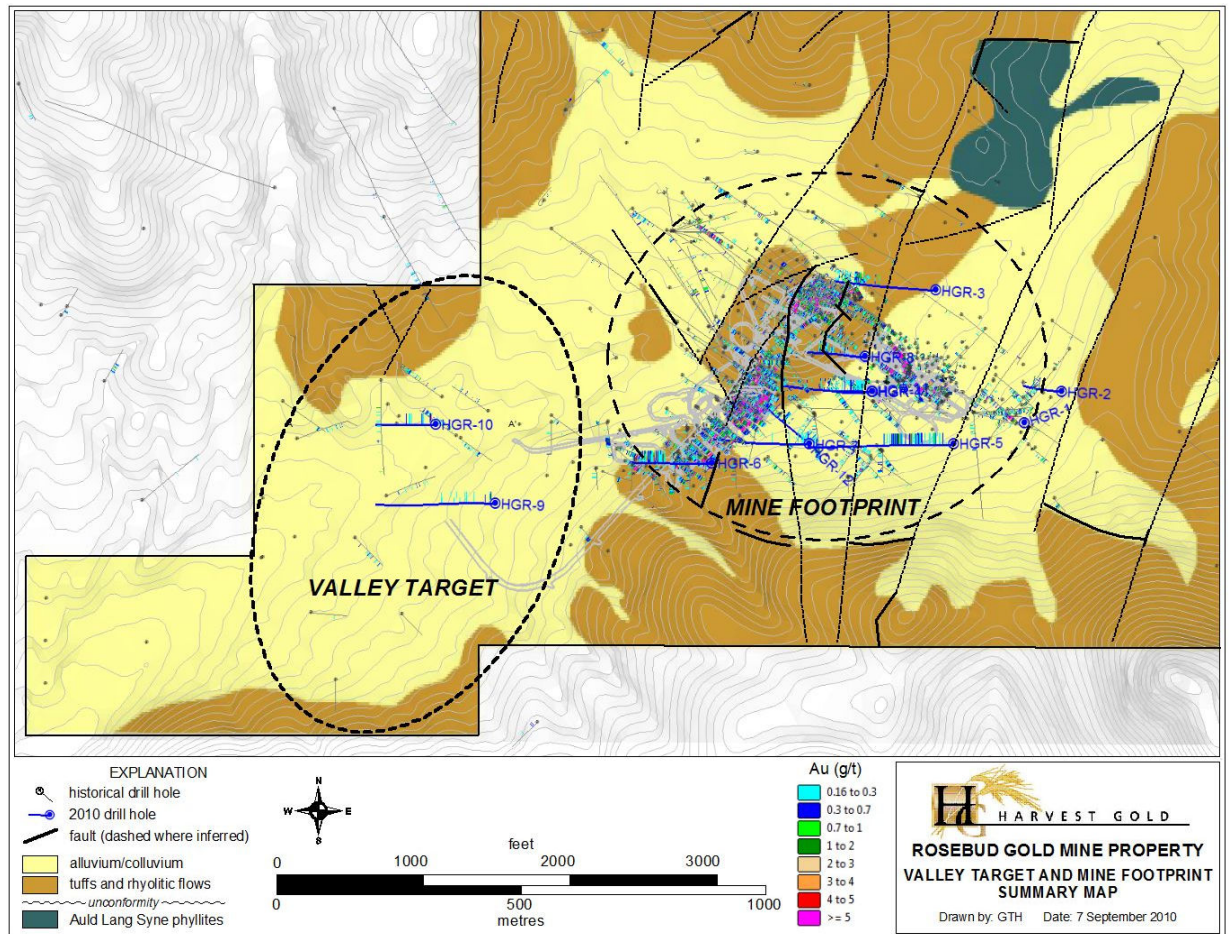


Figure 1 2010 Drill Hole Locations (Source: Company)

Phase 2 Drill Program

Phase 2 drilling at the Rosebud project started on March 2, 2011. The drill program is designed to follow up intercepts from Phase 1 drilling as well as to test other targets adjacent to the Mine Footprint. Drilling will consist of up to 18 reverse circulation holes totaling approximately 4,270 metres.

To date, three phase 2 holes have been drilled in the valley target to try to extend mineralization identified in Hole HGR-10 which was drilled last year. Other targets such as Southern Extension, Far East, and Northeast will also be tested in this drill program.

Management Update

In January 2011, the company appointed Neil Richardson and John Pattison to its Advisory Board. Their biographies, as provided by the company, follow.

Mr. Richardson has over 22 years experience in mineral exploration and mining operations of base metal and precious metal deposits throughout Canada. Mr. Richardson is the newly appointed COO of VMS Ventures. Prior to his appointment, Neil was the Manager of Exploration for Murgor Resources Inc. Prior to joining Murgor in 2006, he worked for HudBay Minerals Inc. as a Senior Exploration Geologist responsible for greenfield and

brownfield projects in the Flin Flon - Snow Lake area. He was part of a team that discovered a number of new mineralized zones throughout the belt. He also has past experience as a Senior Mine Geologist with extensive background in resource - reserve estimations and operations.

John Pattison is a professional geoscientist with a B.Sc. degree in Geological Sciences from the University of Toronto. He has a strong technical background and over 25 years experience in copper-zinc and nickel-copper-PGE sulphide exploration. He specializes in the effective application of Geographical Information Systems (GIS) technology to mineral exploration. From 1983 to 2002 John worked with Falconbridge Limited and associated companies where he was responsible for managing base metal, PGE and gold exploration projects throughout Canada and southern Africa. John presently consults to VMS Ventures and North American Nickel and is also on their Advisory Boards.

Financials

At the end of December 2010, the company had \$0.45 million in cash. The working capital deficit was \$0.43 million. The company reported a net loss of \$0.42 million (EPS: -\$0.01) in the first nine months of FY2010 (ended December 2010). We estimate the company had a burn rate (spending on operations and exploration) of \$0.14 million per month in the first nine months of FY2010, versus \$0.05 million in FY2010 (12 month period). The table below shows a summary of the company's cash and liquidity position.

(in C\$)	2011 (9 mo)	2010
Working Capital	433,282	(10,561)
Current Ratio	4.97	0.96
Monthly Burn Rate (incl. exploration)	(140,860)	(46,447)
LT Debt / Assets	-	-
Cash from Financing Activities	1,470,364	-

Subsequent financing: On February 3, 2011, the company closed a private placement of 10.05 million units at a price of \$0.10 per unit for gross proceeds of \$1.05 million. Each unit is comprised of one common share and one half of a share purchase warrant (exercise price - \$0.15, expiry date - February 3, 2012).

The company currently has \$1.1 million in cash, with a CAPEX budget of \$0.78 million for 2011. We do not foresee any need for additional financing in the next six months.

Stock Options and Warrants: The company currently has 5.9 million options (weighted average exercise price - \$0.12) and 19.80 million warrants (weighted average exercise price - \$0.18) outstanding.

Valuation and Rating

Our revised fair value estimate on HVG is \$0.35 per share (or \$24.43 million), up from our previous estimate of \$0.22 per share (\$12.78 million). Our valuation increased primarily because its peer average EV/gold resource ratio has increased from \$40/oz to \$83/oz since our previous report on the company in August 2010. A summary of our valuation is shown below.

Valuation Summary	VPS	Value
Rosebud property	\$0.32	\$22,738,593
Book value of other projects	\$0.01	\$590,347
Estd. working capital	\$0.02	\$1,100,000
Net Fair Value	\$0.35	\$24,428,940

We reiterate our BUY rating and raise our fair value estimate from \$0.30 per share to \$0.35 per share.

Risks

The following risks, though not exhaustive, may cause our estimates to differ from actual results:

- The company currently has no operating mines.
- The value of the company depends heavily on commodity prices (gold and silver).
- Access to capital and share dilution.
- The success of drilling, project development and resource identification and expansion are important long term success factors for these early projects.

We have maintained our risk rating at 5 (Highly Speculative).

Fundamental Research Corp. Equity Rating Scale:**Buy** – Annual expected rate of return exceeds 12% or the expected return is commensurate with risk**Hold** – Annual expected rate of return is between 5% and 12%**Sell** – Annual expected rate of return is below 5% or the expected return is not commensurate with risk**Suspended or Rating N/A**— Coverage and ratings suspended until more information can be obtained from the company regarding recent events.**Fundamental Research Corp. Risk Rating Scale:****1 (Low Risk)** - The company operates in an industry where it has a strong position (for example a monopoly, high market share etc.) or operates in a regulated industry. The future outlook is stable or positive for the industry. The company generates positive free cash flow and has a history of profitability. The capital structure is conservative with little or no debt.**2 (Below Average Risk)** - The company operates in an industry where the fundamentals and outlook are positive. The industry and company are relatively less sensitive to systematic risk than companies with a Risk Rating of 3. The company has a history of profitability and has demonstrated its ability to generate positive free cash flows (though current free cash flow may be negative due to capital investment). The company's capital structure is conservative with little to modest use of debt.**3 (Average Risk)** - The company operates in an industry that has average sensitivity to systematic risk. The industry may be cyclical. Profits and cash flow are sensitive to economic factors although the company has demonstrated its ability to generate positive earnings and cash flow. Debt use is in line with industry averages, and coverage ratios are sufficient.**4 (Speculative)** - The company has little or no history of generating earnings or cash flow. Debt use is higher. These companies may be in start-up mode or in a turnaround situation. These companies should be considered speculative.**5 (Highly Speculative)** - The company has no history of generating earnings or cash flow. They may operate in a new industry with new, and unproven products. Products may be at the development stage, testing, or seeking regulatory approval. These companies may run into liquidity issues, and may rely on external funding. These stocks are considered highly speculative.**Disclaimers and Disclosure**

The opinions expressed in this report are the true opinions of the analyst about this company and industry. Any "forward looking statements" are our best estimates and opinions based upon information that is publicly available and that we believe to be correct, but we have not independently verified with respect to truth or correctness. There is no guarantee that our forecasts will materialize. Actual results will likely vary. The analyst and Fundamental Research Corp. "FRC" does not own any shares of the subject company, does not make a market or offer shares for sale of the subject company, and does not have any investment banking business with the subject company. Fees were paid by HVG to FRC. The purpose of the fee is to subsidize the high costs of research and monitoring. FRC takes steps to ensure independence including setting fees in advance and utilizing analysts who must abide by CFA Institute Code of Ethics and Standards of Professional Conduct. Additionally, analysts may not trade in any security under coverage. Our full editorial control of all research, timing of release of the reports, and release of liability for negative reports are protected contractually. To further ensure independence, HVG has agreed to a minimum coverage term including an initial report and three updates. Coverage can not be unilaterally terminated. Distribution procedure: our reports are distributed first to our web-based subscribers on the date shown on this report then made available to delayed access users through various other channels for a limited time. The performance of FRC's research is ranked by Investars. Full rankings and are available at www.investars.com.

The distribution of FRC's ratings are as follows: BUY (73%), HOLD (7%), SELL (4%), SUSPEND (16%).

To subscribe for real-time access to research, visit <http://www.researchfrc.com/subscription.htm> for subscription options.

This report contains "forward looking" statements. Forward-looking statements regarding the Company and/or stock's performance inherently involve risks and uncertainties that could cause actual results to differ from such forward-looking statements. Factors that would cause or contribute to such differences include, but are not limited to, continued acceptance of the Company's products/services in the marketplace; acceptance in the marketplace of the Company's new product lines/services; competitive factors; new product/service introductions by others; technological changes; dependence on suppliers; systematic market risks and other risks discussed in the Company's periodic report filings, including interim reports, annual reports, and annual information forms filed with the various securities regulators. By making these forward looking statements, Fundamental Research Corp. and the analyst/author of this report undertakes no obligation to update these statements for revisions or changes after the date of this report. A report initiating coverage will most often be updated quarterly while a report issuing a rating may have no further or less frequent updates because the subject company is likely to be in earlier stages where nothing material may occur quarter to quarter.

Fundamental Research Corp DOES NOT MAKE ANY WARRANTIES, EXPRESSED OR IMPLIED, AS TO RESULTS TO BE OBTAINED FROM USING THIS INFORMATION AND MAKES NO EXPRESS OR IMPLIED WARRANTIES OR FITNESS FOR A PARTICULAR USE. ANYONE USING THIS REPORT ASSUMES FULL RESPONSIBILITY FOR WHATEVER RESULTS THEY OBTAIN FROM WHATEVER USE THE INFORMATION WAS PUT TO. ALWAYS TALK TO YOUR FINANCIAL ADVISOR BEFORE YOU INVEST. WHETHER A STOCK SHOULD BE INCLUDED IN A PORTFOLIO DEPENDS ON ONE'S RISK TOLERANCE, OBJECTIVES, SITUATION, RETURN ON OTHER ASSETS, ETC. ONLY YOUR INVESTMENT ADVISOR WHO KNOWS YOUR UNIQUE CIRCUMSTANCES CAN MAKE A PROPER RECOMMENDATION AS TO THE MERIT OF ANY PARTICULAR SECURITY FOR INCLUSION IN YOUR PORTFOLIO. This REPORT is solely for informative purposes and is not a solicitation or an offer to buy or sell any security. It is not intended as being a complete description of the company, industry, securities or developments referred to in the material. Any forecasts contained in this report were independently prepared unless otherwise stated, and HAVE NOT BEEN endorsed by the Management of the company which is the subject of this report. Additional information is available upon request. THIS REPORT IS COPYRIGHT. YOU MAY NOT REDISTRIBUTE THIS REPORT WITHOUT OUR PERMISSION. Please give proper credit, including citing Fundamental Research Corp and/or the analyst, when quoting information from this report.

The information contained in this report is intended to be viewed only in jurisdictions where it may be legally viewed and is not intended for use by any person or entity in any jurisdiction where such use would be contrary to local regulations or which would require any registration requirement within such jurisdiction.