

**SAN GOLD CORPORATION**  
**SGR - TSX Venture**  
 Contact: Dale Ginn, President  
 Tel: 204.794.5818  
 Fax: 807.543.2435  
 Mine Office  
 Bissett, Manitoba R0E 0J0  
 www.sangoldcorp.com  
 dginn@sangold.com

**GOLDVIEW GOLD INC.**  
 Tel: 647-477-2352  
 Fax: 647-477-2389  
 230 Bay Street  
 Toronto, Ontario M5J 2W4  
 Toronto, grandviewgold.com  
 info@grandviewgold.com

**BISON GOLD EXPLORATION INC.**  
**BEI-CNQ**  
 Contact: Christopher Watkins, President  
 Tel: 416.850-4922  
 Fax: 416.850-4962  
 Suite 500, 360 Bay Street  
 Toronto, Ontario M5H 2V6  
 www.bisongold.com  
 info@bisongold.com

**HARVEST GOLD**  
**HVG - TSX Venture**  
 Tel: 604.986.2020  
 Toll Free: 1.866.816.0118  
 Fax: 604.986.2021  
 301, 280 West Esplanade  
 North Vancouver, British Columbia V7M 5G7  
 www.harvestgoldcorp.com  
 info@harvestgoldcorp.com

**GPR GOLDEN POCKET RESOURCES**  
 Tel: 204.988.2174  
 Box 17, Grp 525, RRS  
 2262 Springfield Road  
 Winnipeg Manitoba R2C 2Z2  
 www.goldenpocketresources.com  
 info@goldenpocketresources.com

**OUTBACK CAPITAL INC.**  
**Pinefalls Gold**  
 Contact: Doug Ford  
 Tel: 604.904.8481  
 Fax: 604.904.9431  
 Suite 206, 828 Harbourside Drive  
 North Vancouver, British Columbia V7P 3R9  
 pinefallsgold@telus.net

**Manitoba Industry, Economic Development and Mines**  
 Tel: 204.945.6588  
 Toll-free: 1.800.223.5215  
 Fax: 204.945.8427  
 www.gov.mb.ca/mines/index.html  
 Tel: 204.945.6569  
 Toll-free: 1.800.223.5215  
 www.gov.mb.ca/mines  
 minesinfo@gov.mb.ca

**MARUM RESOURCES INC.**  
**MMU - TSX Venture**  
 Toll Free: 1.800.321.8564  
 Suite 400, 604 Street SW  
 Calgary, Alberta T2P 1T1  
 www.marumresources.com  
 marumresources@shaw.ca

Map compiled and produced by:  
**MINERAL INFORMATION MAPS**  
 www.minimaps.com  
 • Where are the hot plays?  
 • Who's along the coast?  
 • What are the latest maps?  
 Tel: (403) 282-8663 Fax: (403) 282-8616  
 E-Mail: gjen@minimaps.com  
 Website: www.minimaps.com

**Production and Mineral Inventory of the Rice Lake Gold District**

Deposit name	Ownership	Grade (g/t)	Tonnage	Grade (g/t)	Ownership	Category
RICE LAKE	1,462,055	0.26	901,800	0.27	243,486	proven & probable
<b>(SAN ANTONIO)</b>						
CENTRAL MANITOBA	137,817	0.36	-	0.28	500	total resource
GUNNAR	89,715	0.35	-	-	-	-
OSAMA-ROCKLAND	45,445	0.33	-	-	-	-
EEP	13,811	0.17	-	-	-	-
SOLO-DURO GRANDE	5,129	0.33	-	-	-	-
<b>SAN GOLD #1</b>						
			283,178	0.22	82,299	indicated
			684,588	0.22	152,959	inferred
PACKSACK			272,153	0.3	90,151	inferred
<b>TOTAL</b>	<b>1,771,541</b>					

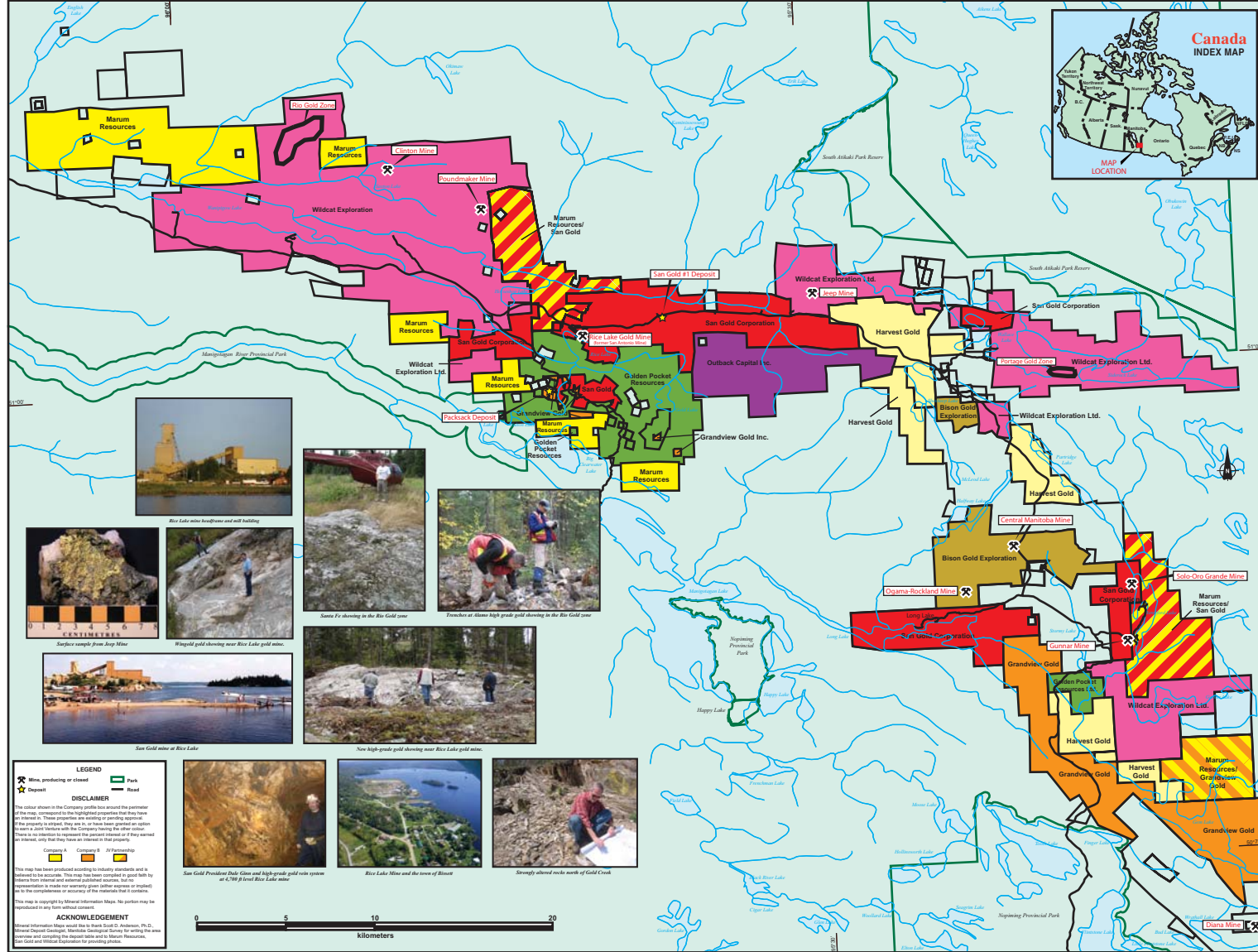
**The Rice Lake Gold District, Southeast Manitoba**  
**Introduction**  
 The Rice Lake Gold District is historically the most significant gold-gold district in Manitoba, with production of 1.7 million ounces of gold from several past-producing mines, including 1.46 million ounces from the Rice Lake Gold Mine of Bissett (formerly known as the San Antonio Mine). This district, which is the largest gold-gold deposit discovered to date in the relatively under-explored Superior Province of Manitoba, hosts a total resource of 650,000 ounces and is currently being developed for re-opening by San Gold Corp. The discovery of auriferous quartz veins on the north shore of Rice Lake in 1911 resulted in a flurry of prospecting activity, which continued into the early 1930s. Surface prospecting during this time period resulted in the discovery of several of the known deposits in the belt, and comparatively little systematic gold exploration has occurred until recently.

**Regional setting**  
 The Rice Lake belt is located about 150 km northwest of Winnipeg, Manitoba, and extends in an arcuate northeasterly trend for 100 km to its eastern termination in Ontario, to the east shore of Lake Winnipeg where it continues to the west for an unknown distance beneath Paleozoic cover. Situated in the western Litch Supergroup of the Archean Superior Province of the Canadian Shield, the Rice Lake belt is bounded to the north and south, respectively, by the crustal-scale Winnipeg and Manigotjig shear zones. In Manitoba, the volcano-sedimentary Litch Supergroup is truncated to the north by the North Caribou continental terrane and to the south by the metamorphosed English River Supergroup. Supracrustal assemblages in these domains provide a record, spanning from 3000 to 1800 Ma, of repeated metamorphism, sedimentation and igneous activity along the south margin of the North Caribou terrane, and are closely comparable to the profile Rice Lake belt, located to the east in northeastern Ontario.

**Gold mineralization**  
 Gold mineralization in the Rice Lake belt is typically hosted by synmetamorphic quartz-carbonate veins in brittle-ductile fractures or shear planes that formed under greenschist-facies metamorphic conditions within or along the margins of mafic and felsic plutons. The Rice Lake gold deposit, which consists of a complex array of auriferous stockwork and shear-hosted quartz-carbonate veins hosted by the San Antonio gabbro, is the most significant example of this mineralization style, and is widely cited as a classical example of orogenic lode-gold deposits. Structural overprinting relationships indicate that the auriferous veins formed subsequent to the development of belt-scale doubly-kinning F3 folds, and are preferentially hosted by discrete, northward- or northeast-trending, high-angle zones and related strike fractures formed during D3 deformational deformation.

**Exploration Potential**  
 Despite significant geological similarities to the profile Rice Lake belt in Ontario, including the presence of thick successions of Barre-equivalent rocks, the Rice Lake belt has received comparatively little systematic gold exploration. However, the combination of tectonic structural preparation and clear occurrence of crustal-scale 'trunks', coupled with the widespread distribution of chemically and rheologically favourable rock types, indicates excellent potential for additional lode-gold discoveries in the Rice Lake belt.

**Key references on exploration:**  
 • Barber, A.J., and eight others, 2005. Geology of the west Litch map area, Manitoba and Ontario. Manitoba Industry, Trade and Mines, Manitoba Geological Survey, Open File Report OF 2005-1, 230 000 scale with marginal notes.  
 • McPhillips, W.C. and others, 1971. Geology and Geophysics of the Rice Lake Region, Southeastern Manitoba (Project Position). Manitoba Department of Mines and Natural Resources, Mines Branch Publication T-1, 1:430 p., with maps.  
 • Paraginsky, D.A. and 17 others, 2001. Geoscience data compilation for southeastern Manitoba. Manitoba Industry, Trade and Mines, Manitoba Geological Survey, Open File Report OF 2001-1, 230 000 scale with marginal notes.  
 • Pridmore, J.H., Wiles, W., Bromberg, E. and Sandhu, D.S. 1996. Lithostratigraphic assembly and structural setting of gold mineralization in the eastern Rice Lake greenstone belt, Manitoba. C.A.C.-M.C. Joint Annual Meeting, Feb 18-24 Goldfields, 519 p.  
 • Richardson, D.J. and Orey, C. 1996. Gold Deposits of Manitoba (2nd edition). Manitoba Energy and Mines, Economic Geology Report 0386, 1:124, with maps.



**RICE LAKE GOLD BELT MANITOBA, CANADA**  
**Mining and Exploration Activity**

**JANUARY 2006**  
 Produced by: Mineral Information Maps, a division of Interra Ltd. Published jointly with The Northern Miner

www.minimaps.com  
 Interra Resource Intelligence  
 The Northern Miner

**ACKNOWLEDGEMENT**  
 Mineral Information Maps would like to thank Scott C. Dickson, the 2nd Mineral Deposit Geologist, Manitoba Geological Survey for writing the area map and providing the regional data for the Rice Lake Resources. San Gold and Wildcat Exploration for providing photos.